



HomeHealth
Visiting Nurses
MaineHealth

Remote Patient Monitoring Case Study

Presented by:

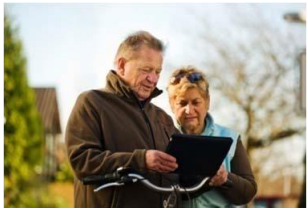
Robert Abel, RN, Chief Nursing Officer and Palliative Care Director

I have no financial relationship with a commercial entity producing healthcare-related products and/or services relevant to the content I am presenting.

Tools of Telehealth Technology

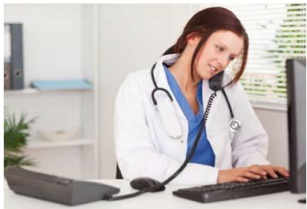


- 4G tablet with pre-loaded software to include video education, health assessments, video visit capacity



- Patients use tablet to comply with treatment plan & remain engaged in self-care activities

- Patients can access tablet to immediately access caregiver, clinician or tech support



- Data input to track activity, diet, vital signs, weight & medication available for clinician & caregiver review



- Caregivers & clinicians receive alerts to intervene if patient is at increased risk for urgent care or hospital readmission

The Peripherals



**Wireless
Watch Pedometer**



**Wireless Glucose
Monitor**



**Wireless
Scale**



**Wireless
Pulseoximeter**



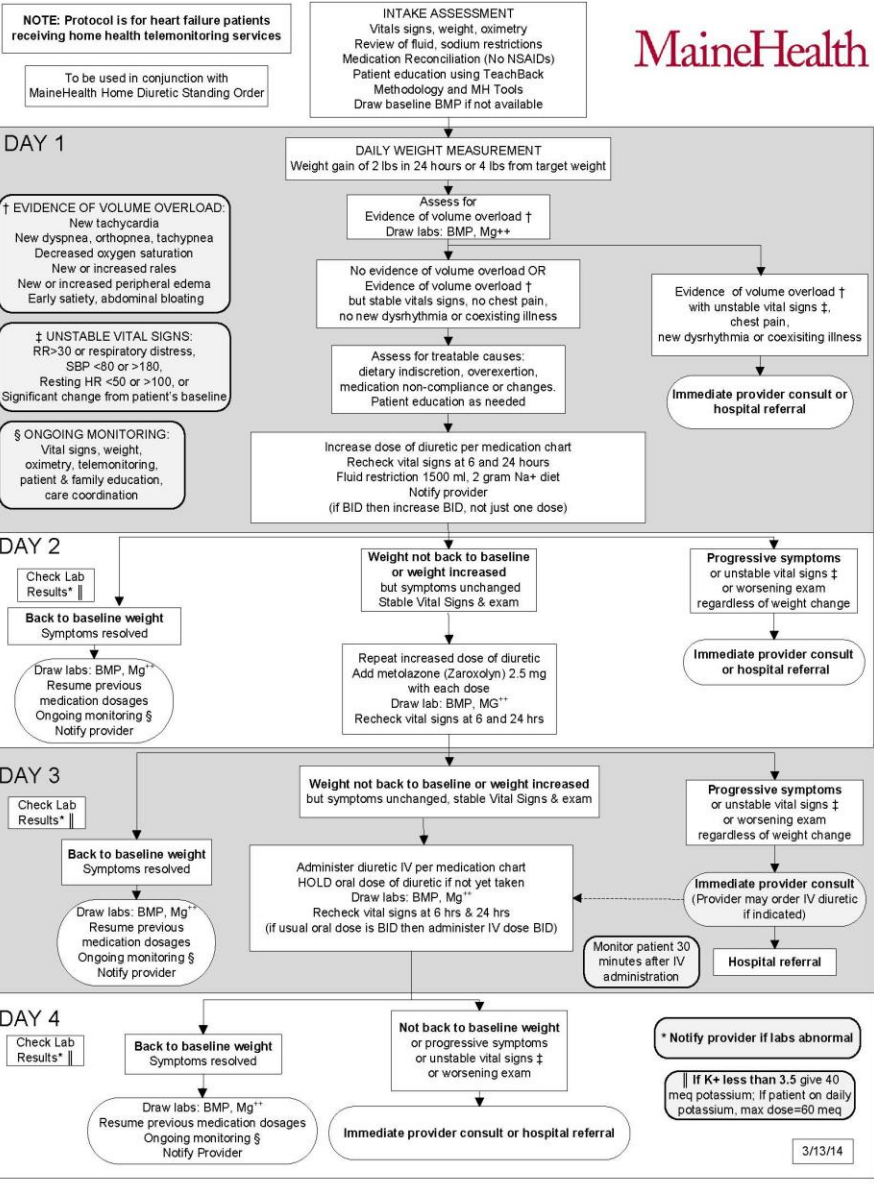
**Wireless Blood
Pressure Monitor**



**Wireless
Thermometer**

HOME DIURETIC PROTOCOL FOR HEART FAILURE

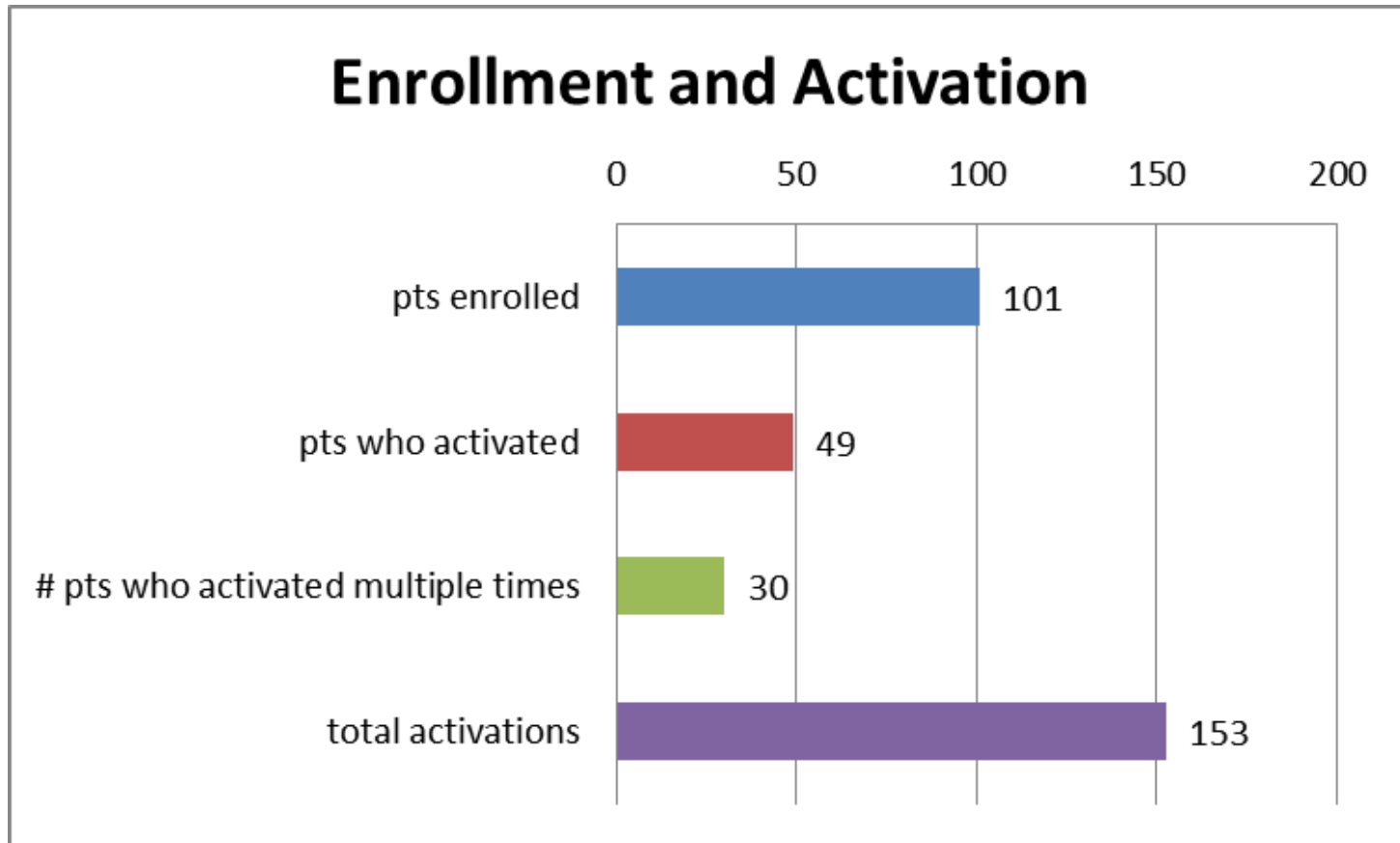
MaineHealth



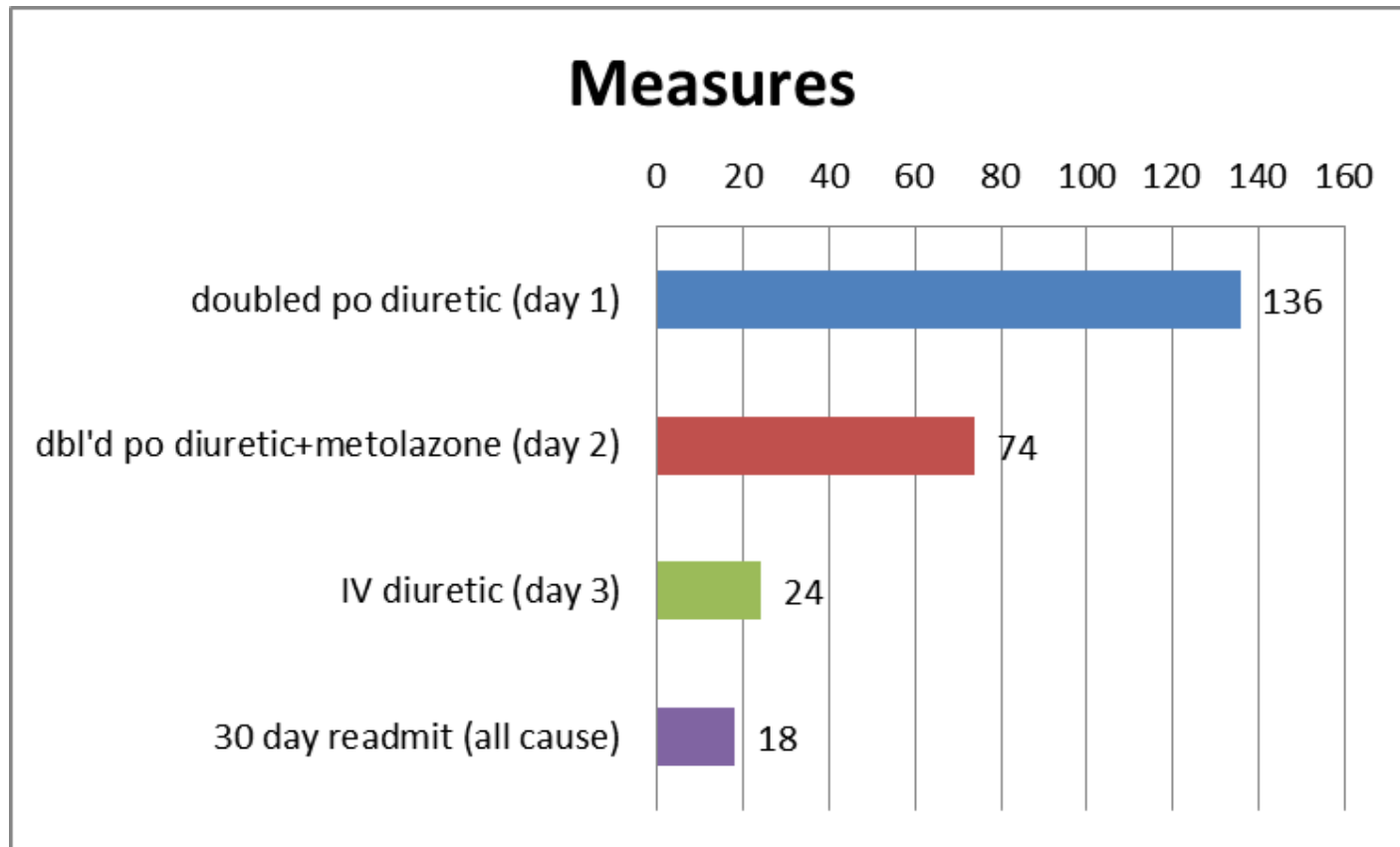
Our Results: March 2015 – August 2015

- Served 275 Patients (CHF, COPD, Diabetes)
- Patient Adherence: 74.5% - 77%
- Improved Clinical Outcomes
- Increased Patient Satisfaction Average (top 4)
 - 3.91% - would recommend tablet to family/friends
 - 3.81% - tablet is easy to use and positive experience
 - 3.67% - tablet increases satisfaction with healthcare provider
- Reduced Hospital Readmission
 - 30-day 11.3%
 - 60-day 4.72%

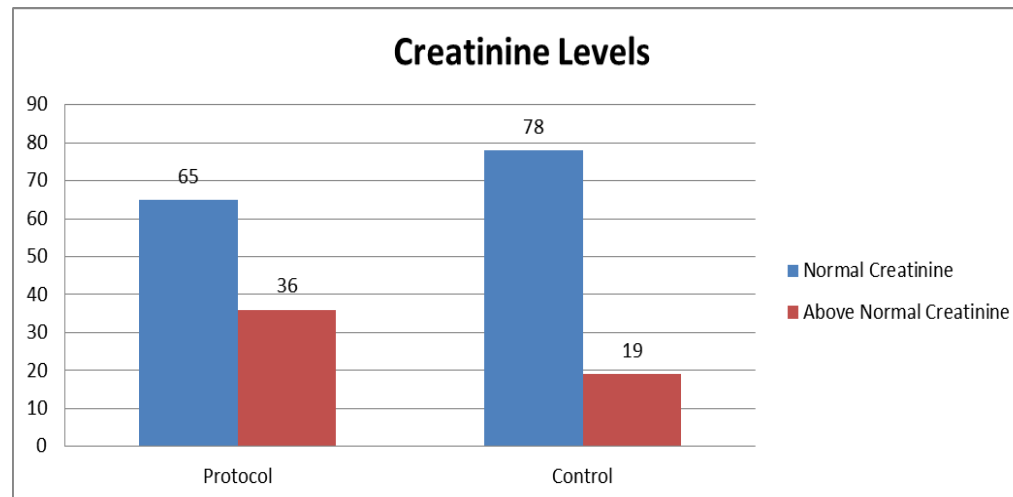
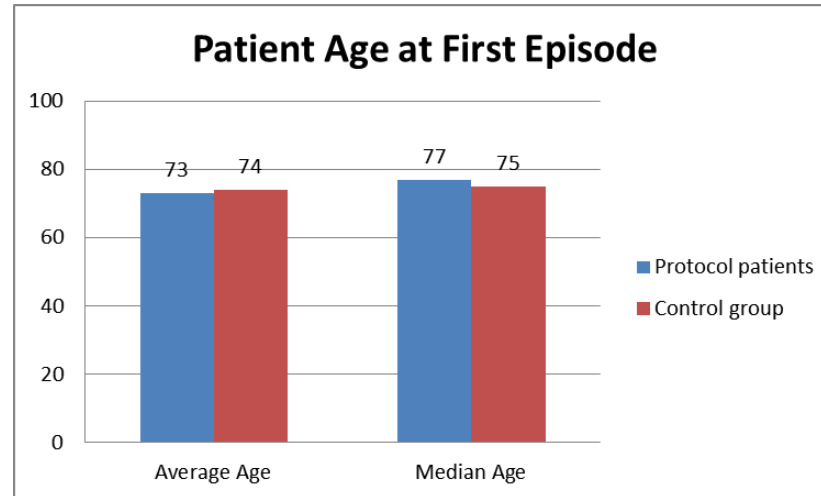
MaineHealth Home Diuretic Protocol



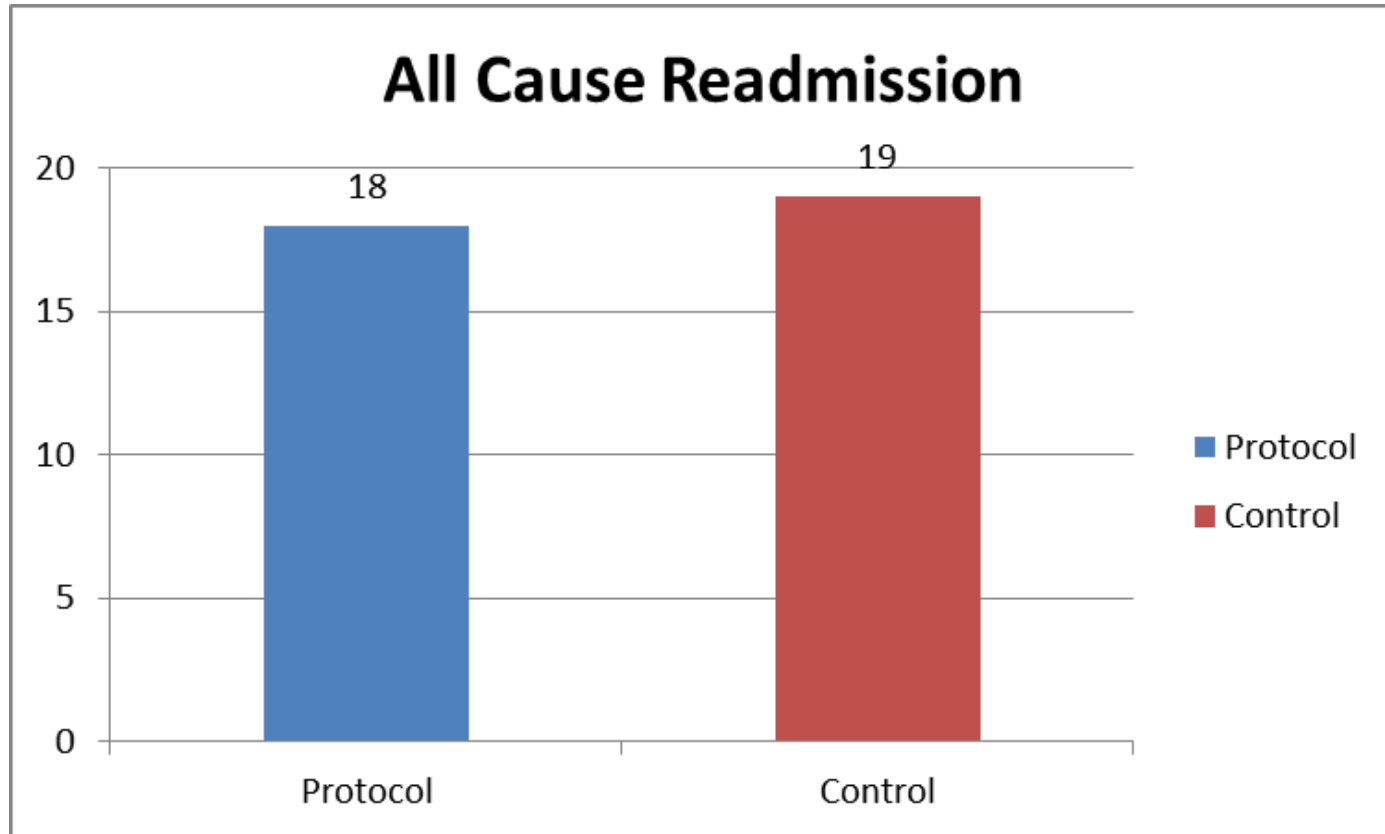
HDP Experience



HDP (n=101) and Comparison Group (n=100)



HDP: Value



Further Analysis: Value

Apples and apples or apples and oranges?

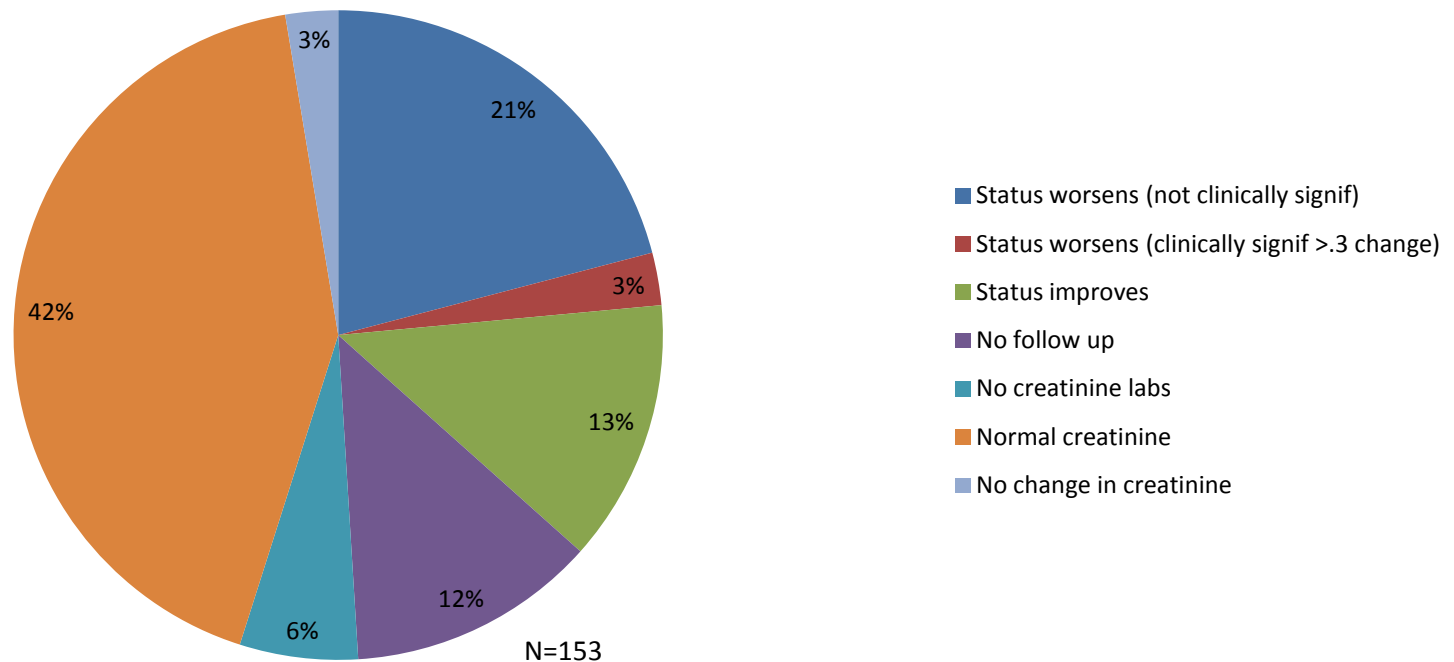
- Are the protocol patients sicker?
 - Average length of episode of comparison group vs protocol group
 - Mortality between groups
 - EF?
- Other?

How to qualify/quantify #readmits/activations, not just #readmits/patient?

How to qualify/quantify value to Home Health and/or providers

Home Diuretic Protocol: Safety

**Creatinine Levels
Home Diuretic Protocol**



Home Diuretic Protocol: Cost

HDP

	Baseline	Day 1	Day 2	Day 3	Day 4
telehealth	\$30.00	\$30.00	\$30.00	\$30.00	\$30.00
nurse visit	\$162.95	\$162.95	\$162.95	\$162.95	\$162.95
labs	\$31.95	\$31.95	\$31.95	\$31.95	\$31.95
IV kit	\$25.00	\$0.00	\$0.00	\$0.00	\$0.00
IV diuretic	\$0.00	\$0.00	\$0.00	\$5.00	\$0.00
total	\$249.90	\$224.90	\$224.90	\$229.90	\$224.90
cumulative		\$474.80	\$699.70	\$929.60	\$1,154.50

Comparison Group

	Baseline	Day 1	Day 2	Day 3	Day 4
telehealth	\$30.00	\$30.00	\$30.00	\$30.00	\$30.00
nurse visit	\$162.95				\$162.95
total	\$ 192.95	\$ 30.00	\$ 30.00	\$ 30.00	\$ 192.95
cumulative		\$ 222.95	\$ 252.95	\$ 282.95	\$ 475.90

ER for HF Jan-Mar 2015

	all (1025)	discharged (728)	admitted (279)
Avg ED charges	\$2,837.00	\$1,644.00	\$3,272.00



HomeHealth
Visiting Nurses

MaineHealth

THANK YOU

Questions?